

KARIBAN PREMIUM

PK401

Ladies' zipped hoodie

- High quality jacket with a contemporary cut.
- Hood lining in the same material as the jacket.
- LSI treatment (Low Shrinkage Interlock) guaranteeing garment will not shrink as much.

70% cotton / 26% polyester / 4% elastane. Combed cotton. Interlock fabric. LSI treatment (Low Shrinkage Interlock). Two-panel hood, lined in the same fabric as the rest of the jacket, no drawstring. Overstitching at the neck. Taped neck inside the neckline. Matching metal and nylon zip with taped neck inside. Raglan sleeves. 1x1 rib. 2 pockets in the yoke seam. No brand label, only size tag for easy decoration access.



XS - S - M - L - XL - XXL



320 g/m²

LSI No LaBeL

More information

Logistic



5



20



BD - Bangladesh

Customs code



61102099



Black



Deep Navy

Washing instructions



Also available in version



PK400



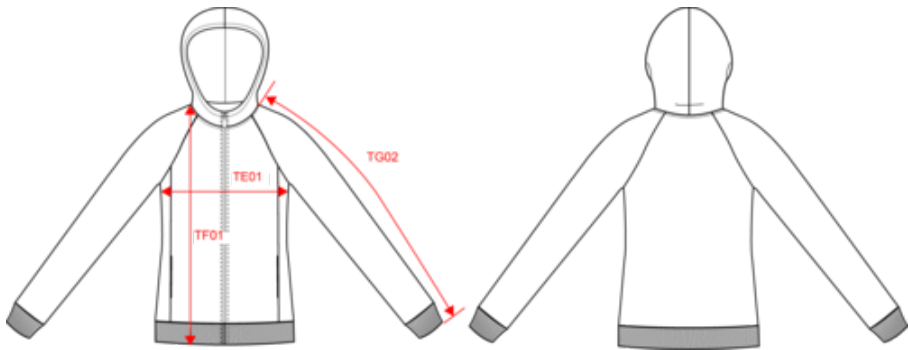
KARIBAN

PREMIUM

PK401

Ladies' zipped hoodie

Dimensions (cm)



Measurements in cm	XS	S	M	L	XL	XXL
TE01 - 1/2 chest width at 1.5cm below armhole	45.00	48.00	51.00	54.00	57.00	60.00
TF01 - Total height from HSP	61.00	63.00	65.00	67.00	69.00	71.00
TG04 - Raglan long sleeve length	69.00	70.75	72.50	74.25	76.00	77.75

KARIBAN

PREMIUM

PK401

Ladies' zipped hoodie

Colours information

Black

RVB : 35,35,37
Pantone C : Black
Pantone TCX : 19-4004TCX

Deep Navy

RVB : 34,35,47
Pantone C : 532C
Pantone TCX : 19-3924TCX

Logistic

5

20

Sizes	Width (cm)	Height (cm)	Length (cm)	Net weight (kg)	Gross weight (kg)	Pieces/Box	Pieces/Bundle
XS	40.00	0.00	60.00	0.00000	0.00000	20	5
S	40.00	0.00	60.00	0.00000	0.00000	20	5
M	40.00	0.00	60.00	0.00000	0.00000	20	5
L	40.00	0.00	60.00	0.00000	0.00000	20	5
XL	40.00	0.00	60.00	0.00000	0.00000	20	5
XXL	40.00	0.00	60.00	0.00000	0.00000	20	5