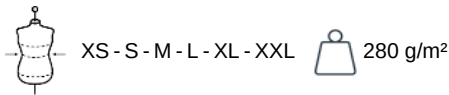


KARIBAN

K7027

Ladies' eco-friendly fleece trousers

85% cotton/15% polyester. Made from 85% organic cotton and 15% recycled polyester. Brushed 3-yarn fleece with LSF (Low Shrinkage Fleece). Enzyme-washed. Straight fit. 2 Italian side pockets. Elasticated waistband with flat drawstring. Elasticated hems. No brand label, only size tag for easy decoration access.

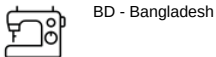


More information

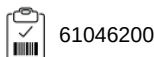
Logistic



Country of origin



Customs code



Washing instructions



Also available in version



K7025

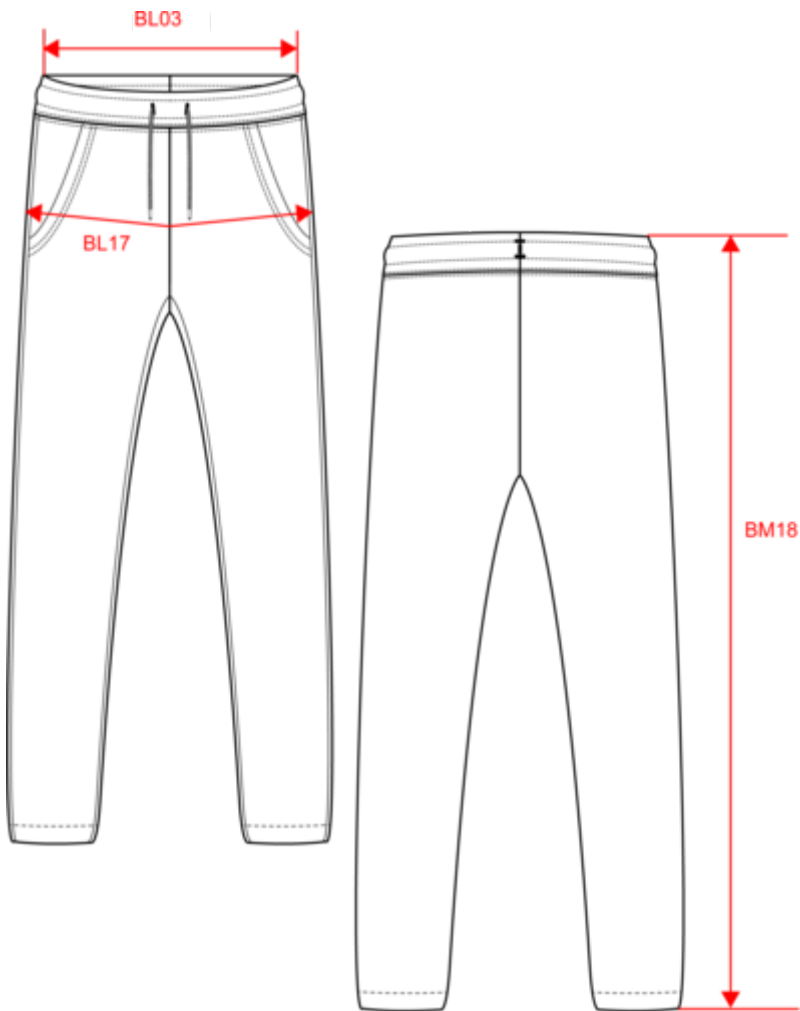


KARIBAN

K7027

Ladies' eco-friendly fleece trousers

Dimensions (cm)



Measurements in cm	XS	S	M	L	XL	XXL
BL03 - 1/2 elasticated waist width relaxed (front over back)	34.00	37.00	40.00	43.00	46.00	49.00
BL17 - 1/2 hip width (measured parallel to waistband)	45.00	48.00	51.00	54.00	57.00	60.00
BM18 - Side length (waistband included)	102.50	103.25	104.00	104.75	105.50	106.25

KARIBAN

K7027

Ladies' eco-friendly fleece trousers

Colours information



Black
RVB : 35,35,37
Pantone C : Black
Pantone TCX : 19-4004TCX



Clay
RVB : 188,180,174
Pantone C : 7535C
Pantone TCX : 15-4502TCX



Grey Heather
RVB :
Pantone C : Based on 417C
Pantone TCX : Based on 18-5203TCX



Navy
RVB : 41,46,56
Pantone C : 433C
Pantone TCX : 19-4012TCX

Logistic



1



20

Sizes	Width (cm)	Height (cm)	Length (cm)	Net weight (kg)	Gross weight (kg)	Pieces/Box	Pieces/Bundle
XS	40.00	30.00	60.00	7.00000	8.50000	20	1
S	40.00	30.00	60.00	0.40000	8.90000	20	1
M	40.00	30.00	60.00	7.80000	9.30000	20	1
L	40.00	32.00	60.00	8.20000	9.70000	20	1
XL	40.00	32.00	60.00	8.60000	10.10000	20	1
XXL	40.00	32.00	60.00	9.00000	10.50000	20	1