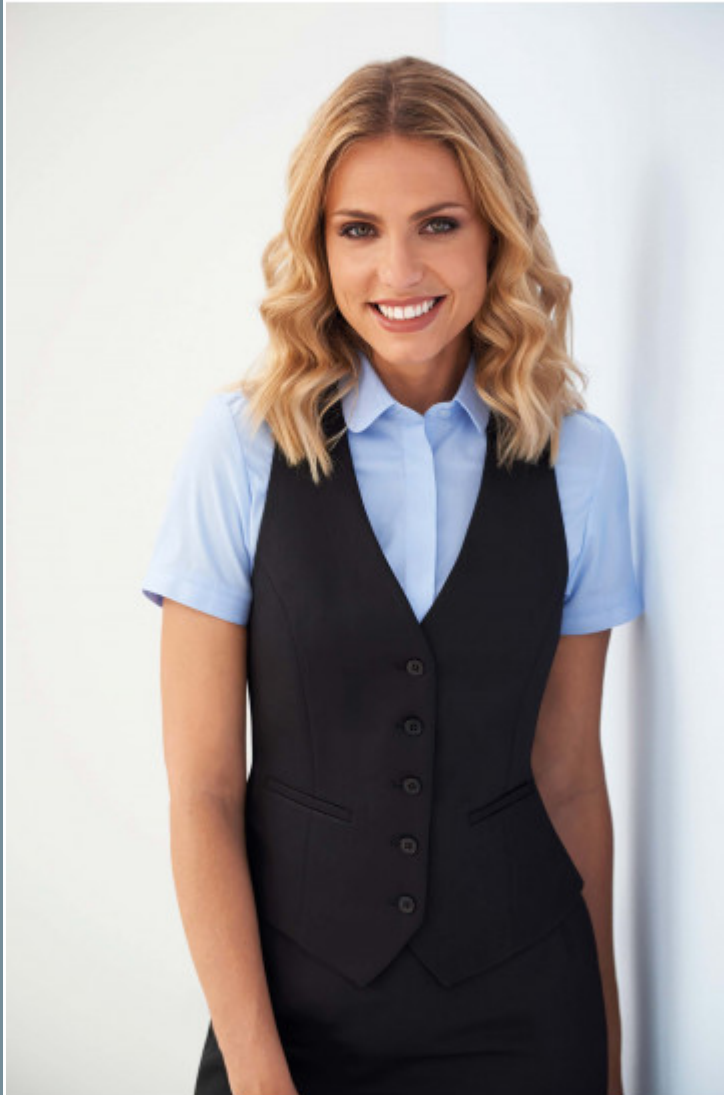


BT2257 Luna Ladies' Waistcoat

5-button waistcoat. 2 welt pockets. Satin back with adjuster.

Catalogue page
p.338



Sizes

XS - S - M - L - XL -
XXL

Fabric weight

335 gsm

Units per package



Colours



Black



Navy

BROOK TAVERNER

corporate tailoring

One Collection
Luna Waistcoat
Style No: **2257**
Shades **D**

METRIC FINISHED MEASURE CHART in centimetres

GARMENT MEASURED FLAT AND FASTENED

SIZE	4-6		8-10		12-14		16-18		20-22		24-26
	X SMALL		SMALL		MEDIUM		LARGE		X LARGE		XX LARGE
CHEST (UNDER ARM)	79.5		89.5		99.5		109.5		119.5		129.5
WAIST (NARROWEST POINT)	71.5		81.5		91.5		101.5		111.5		121.5
CBL REG	49.5		50.5		51.5		52.5		53.5		54.5